



650 CALIFORNIA

Helping you work

HEALTHY | SAFE | CONNECTED | SMART

www.650cal.com

WHAT MAKES 650 CALIFORNIA STREET A GREAT PLACE TO WORK?



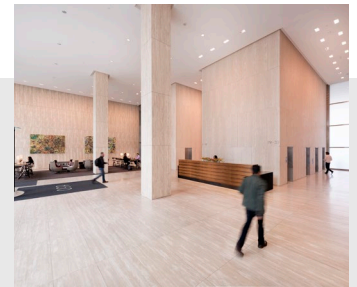
Iconic California Street

Located in the heart of the Financial District, this well-connected office building is just steps from luxury dining, hotels, retailers, and convenient rail and transit services.



World-Renowned Views

Offering unparalleled, panoramic views overlooking the Golden Gate Bridge, Alcatraz, and Colt Tower, 650 California was ranked #2 in the world for "Breathtaking Office Views" by Architectural Digest.



Clean, Fresh Air

Bipolar Ionization air purification technology installed throughout your office building to neutralize viruses, including all individual elevator cabs, gives you the assurance of healthy indoor air.

CERTIFIED TO BE **AMONG THE BEST!**



Certified for efficient, sustainable operations
2024 Score: 82



Recognized for best-in-class green building infrastructure and design



Recognized for best-in-class health and safety infrastructure and design



WiredScore
SILVER

Digital connectivity rating for infrastructure and connectivity

ONSITE AMENITIES JUST FOR TENANTS AT 650 CALIFORNIA

650 CALIFORNIA STREET | San Francisco, California 94108

For additional info and amenity access, visit www.650cal.com or contact the Property Management team.



Onsite Fitness Center

Get fit at work with a full weight-room and cardio equipment; complimentary towel service provided.



Onsite Car and Bike Parking

Take transit, cycle, or simply make the drive and our parking valets will do the rest. EV-Stations available.



Conference Center & Meeting Facilities

Plan your next large meeting in the state-of-the-art conference center.



Red Bay Café in Main Lobby

Grab a hot or cold coffee and a great breakfast, light lunch or snack without ever leaving the building!

HERE TO ENHANCE YOUR WORKDAY EXPERIENCE

Your Property Management Team

Cecile Ramos
Sr. Property Manager
cecile.ramos@columbia.reit

Anastasia Novikova
Sr. Property Financial Manager
anastasia.novikova@columbia.reit

Your Building Owner / Manager

Columbia Property Trust is a world-class developer, owner, and manager of premier real estate in New York City, New Jersey, Boston, Washington, D.C., and San Francisco.